


**GERSTEL**


GERSTEL PFC with rigid transfer line mounted on the right hand side.

## Preparative Fraction Collector

**PFC**

### Specifications

#### Uses

The GERSTEL Preparative Fraction Collector (PFC) collects and concentrates fractions or pure compounds following capillary GC separation. The PFC performs automated collection of up to six user-defined fractions of a sample in addition to the residue. Precise microprocessor control enables unattended operation over days to collect ultra-trace components from dozens or even hundreds of GC runs for further analysis, for example by NMR or FTIR. The PFC includes a flow-splitter to allow simultaneous monitoring of GC peaks by a detector. A unique flow-design eliminates the use of valves in the analyte flow path for best possible compound recovery.

#### System Configuration

- Compatible with most standard GCs
- Designed for parallel operation with most standard detectors including MS
- Designed for parallel operation with the GERSTEL Cryo Trap System CTS 1 or the GERSTEL Olfactory Detector Port ODP

#### Traps

- 6 preparative traps with heating and cooling option
- 1 zero trap with heating and cooling option
- Trap volume 1  $\mu$ L or 100  $\mu$ L
- Special adapter for direct collection of fractions on adsorbent tubes available.

#### Trap Cooling Option

- LN<sub>2</sub> cooling<sup>\*)</sup> or closed circuit cooling
- Minimum temperature -150 °C (LN<sub>2</sub> cooling)
- Temperatures for the zero trap, traps 1-3 and traps 4-6 can be specified separately (LN<sub>2</sub> cooling)
- Temperature range for closed circuit cooling depends on the model used

#### Trap Heating Option

- Maximum temperature 250 °C
- Temperatures for zero trap, traps 1-3 and traps 4-6 can be specified separately

#### Trap Switching

- Sample path without valves
- Heated switching device
- PFC oven temperature max. 400 °C
- Resolution 0.01 min
- Purity 95 % (depends on application)

#### Transfer Line

- Can be configured on the left or right hand side
- Rigid or flexible transfer line can be selected
- Transfer temperature max. 350 °C
- Length of rigid transfer line 45 cm
- Length of flexible transfer line 150 cm

#### Operating Voltage

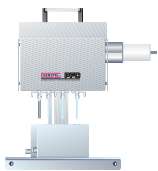
- 100/115 VAC, 50/60 Hz or
- 230 VAC, 50/60 Hz

#### Control

- Based on Controller C505 or C506
- In combination with the GERSTEL MAESTRO software, integrated in the Agilent® Technologies ChemStation software or operated in stand-alone mode
- Only one method and one sequence table required for the complete system including GC/MS when integrated in the ChemStation software

<sup>\*)</sup> Dewar vessel with 1 bar operating pressure mandatory.

Custom solutions for special performance requirements available upon request..



## Preparative Fraction Collector PFC

---

### Operating Conditions

- 15 ... 35 °C
- Relative humidity max. 50-60%, non-condensing
- Max. 4615 m above sea level

### Storage Conditions

- -20 ... 50 °C
- Relative humidity max. 50-60%, non-condensing
- Max. 4615 m above sea level

### Dimensions (H x W x D)

- 47 x 32 x 38 cm

### Weight

- 12 kg

---

**GERSTEL GmbH & Co. KG, Germany**  
gerstel@gerstel.de • www.gerstel.de  
+49 208-7 65 03-0

**GERSTEL AG, Switzerland**  
gerstel@ch.gerstel.com • www.gerstel.de  
+41 41-9 21 97 23

**GERSTEL Inc., USA**  
sales@gerstelus.com • www.gerstelus.com  
+1 410-247 5885

**GERSTEL Brasil**  
gerstel@gerstel.com • www.gerstel.com.br  
+55 11-5665 8931

**GERSTEL K.K., Japan**  
info@gerstel.co.jp • www.gerstel.co.jp  
+81 3 5731 5321

**GERSTEL LLP, Singapore**  
sea@gerstel.com • www.gerstel.com  
+65 6622 5486